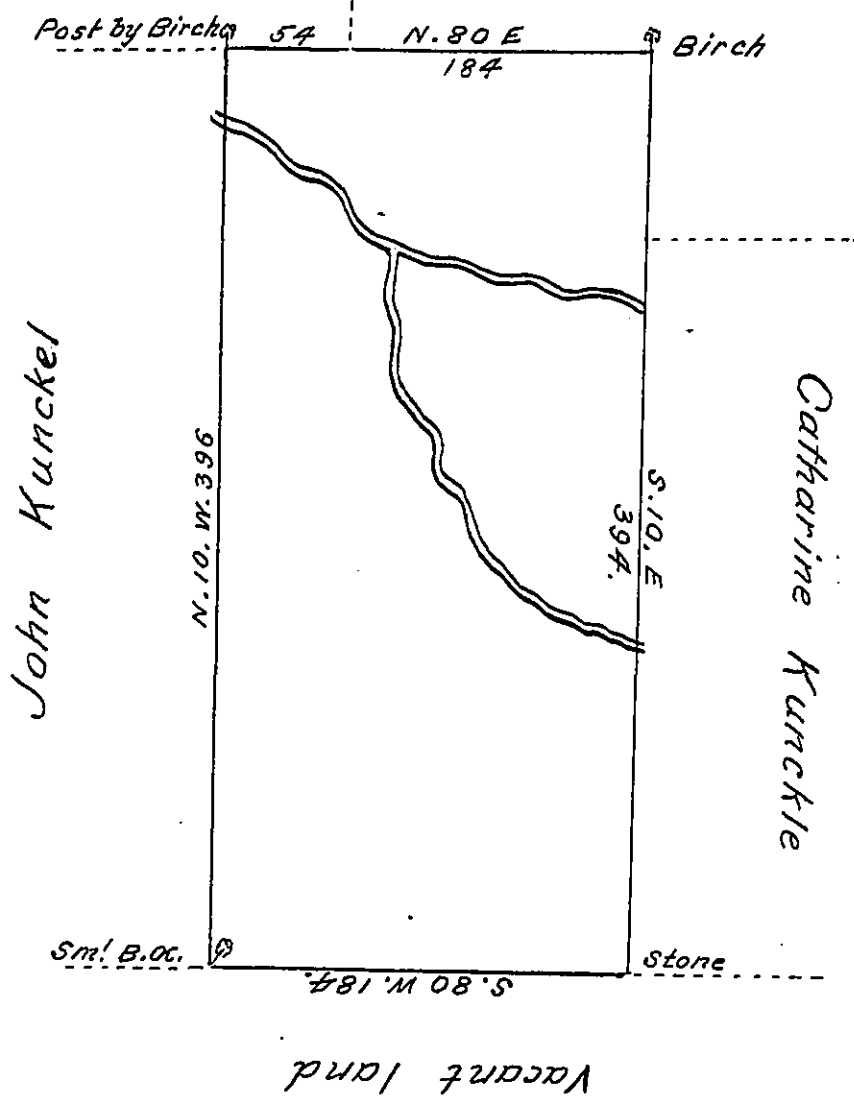


Mary Kunckle

Mary Bowen



By Virtue of a Warrant dated the 12<sup>th</sup> April 1788 Surveyed  
 the 28<sup>th</sup> August 1788 to Venus Lewis the above described tract  
 of land Situate on the West branch of Black creek which is a  
 branch of Nescopeck in Penn Township Northampton County  
 Containing four hundred and twenty nine Acres one hundred  
 perches and the Allowance of Six P Cent &c<sup>a</sup>

John Lukens Esquire }  
 Surveyor General }

Geo. Palmer

IN TESTIMONY that the above is a copy of the original remaining on file in  
 the Department of Internal Affairs of Pennsylvania, made  
 conformably to an Act of Assembly approved the 16th day of  
 February, 1833, I have hereunto set my Hand and caused  
 the Seal of said Department to be affixed at Harrisburg,  
 this eighth day of August 1905.

*Geo. R. Brown*  
 Secretary of Internal Affairs.